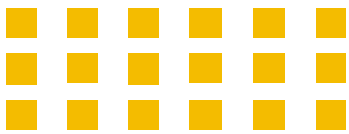




Paige Joseph

Paige Joseph / [hello@paige\\_joseph.com](mailto:hello@paige_joseph.com) / +1 (407)-476-1948



# Table of contents



03

Ride Along  
Safe Parking

07

Eleutheromania  
Hospitality

10

Maison de Juane  
Residential

13

Refuge Coffee Co.  
Retail

16

Spark  
Commerical



# RIDE ALONG

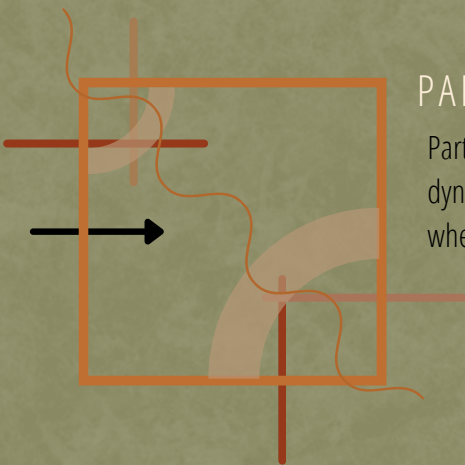
2022 | STUDIO V & VI CAPSTONE

*Ride Along* explores wordplay to create a distinct identity and a sense of space as you progress through the many levels. The design is open to anyone and takes into account the **experiences** people have had. You are drawn into the space by the use of organic shapes that are an abstraction of motorways. On various levels, it demonstrates a sense of belonging and identification as well as a secure environment that embraces the novel concept of a temporary home. Embracing the idea of cozy, **secure** nomads' houses, *Ride Along* endeavors to be a place where one feels **safe**, a place from which one's strengths of character are drawn. The project developed was developed with the idea of Querencia; everyone deserves a home and safety. The project is located in Seattle, a city with some of the strictest regulations and laws for living in your car in the United States of America.

## Modernize Safe Parking

Who | Why | What | Where

- Turn unused parking lots into safe spaces for people living in their cars to park, off public streets, for twelve hours a night
- Adaptive use of empty lots
- Incorporate community solutions for Urban Nomads into the surrounding environment



### PARTI DIAGRAMS

Parti encapsulates how buildings are static but dynamic with how they are used to create a place where one feels at home.



MOOD BOARD



Level 6



Level 7



Level 8



### Journey through and around, Experience



### Ride Along Amenities

Employment Support	Kitchen Space	Temporary Shelter
Hygiene Services	Vehicle Residency	Long-term Shelter

### Bubble Maps



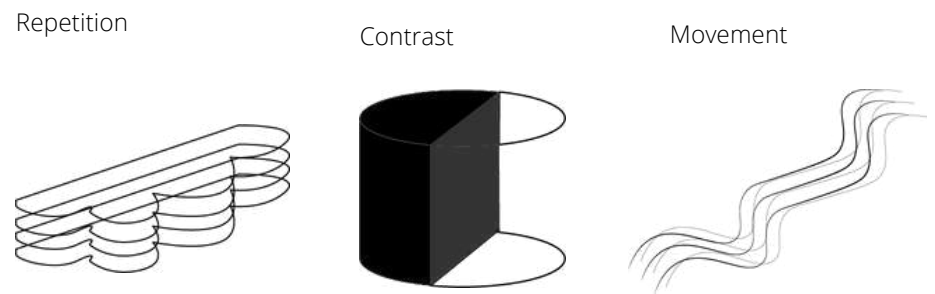
### Attributes

Warm | Safe | Community | Transient

"It feels good to be lost in the right direction" – Unknown



# Design Development

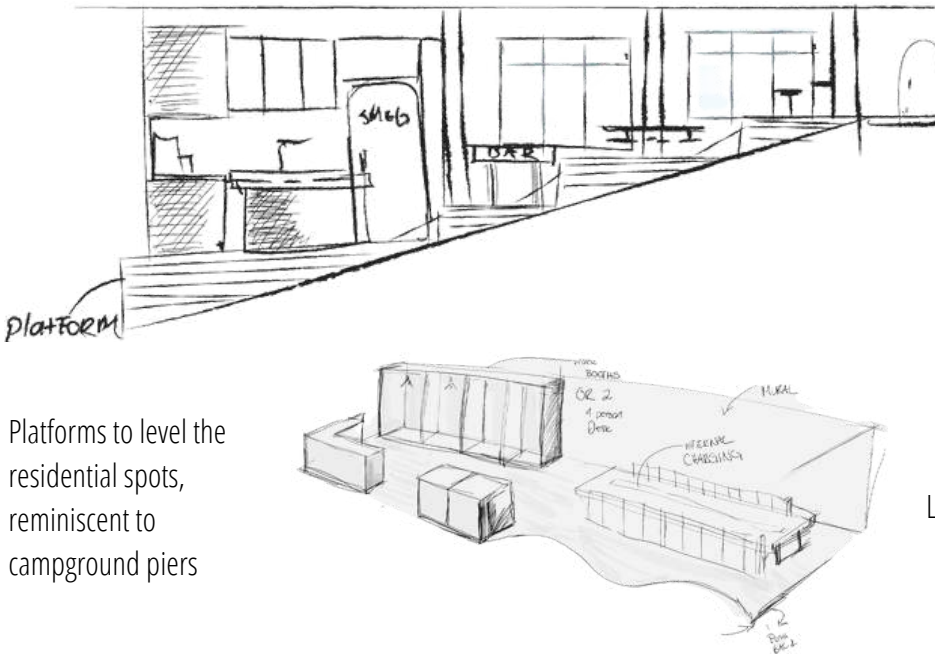


The general design is guided by these three concepts. Sloped paved regions in *Ride Along* were created to make the areas livable using platforms, positive/negative volumes and wayfinding to connect the overall narrative of the environment.

## Project Drivers

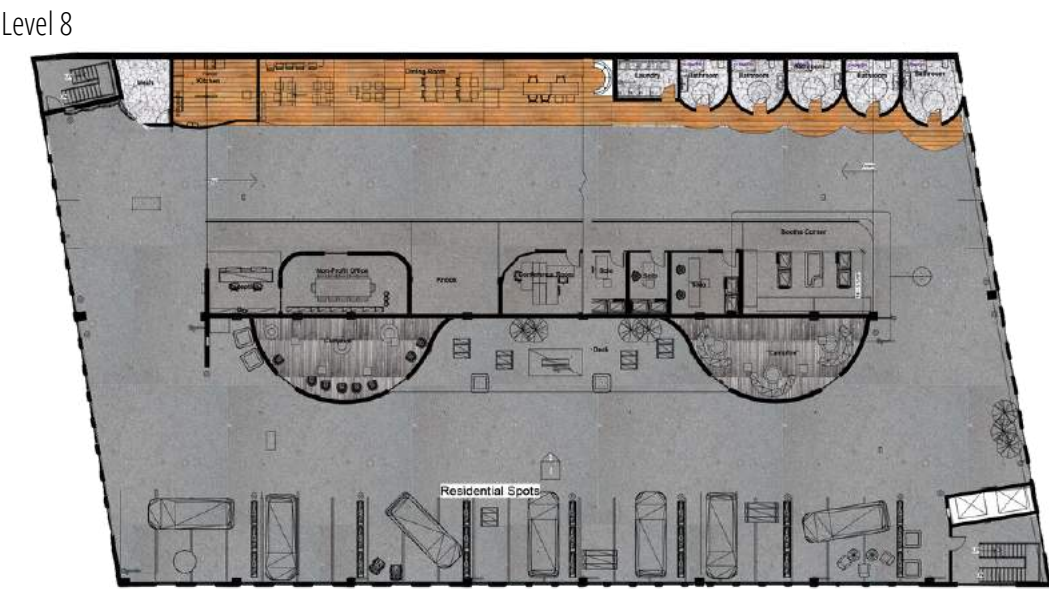
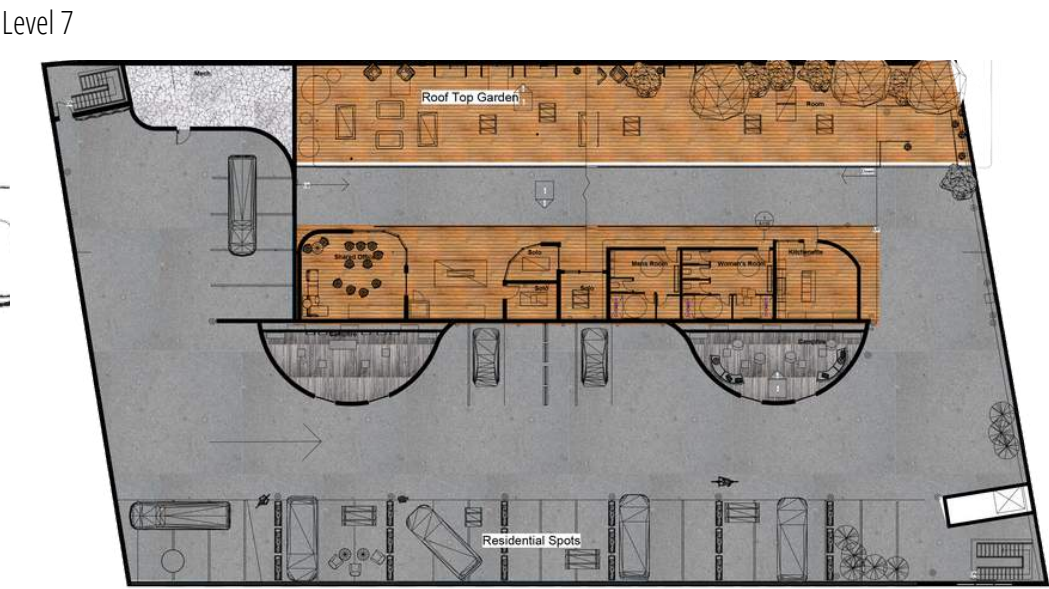
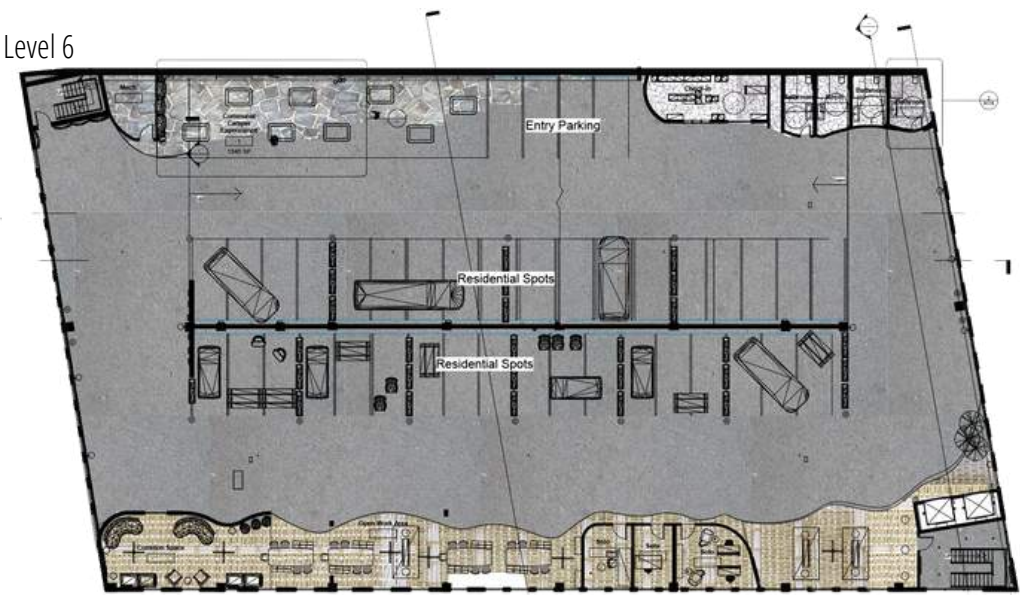
- Integrate vehicle residency into the Urban Environment
- Extending the life of Parking Garages
- Giving Security to design needs that are currently not designed for

Design solution created to contend with building slope



Platforms to level the residential spots, reminiscent to campground piers

Level 6 Entry Social Space



This research project aims to create a community-based solution to the alienation felt by individuals experiencing homelessness who reside in their cars.

- The community-based solution proposed would adopt the form of a ‘Safe Parking’ structure. Building on the tenets of the Safe Parking Programs that several states are now employing, which include having a secure, monitored location in various neighborhoods, affordability measures, and timed allotments.
- People who participate in the programs have access to restrooms, laundry facilities, a sense of physical community, and a secure place to stay the night. I would consider how to use a three-story parking garage as a multifunctional building.



Common Kitchen and Dining



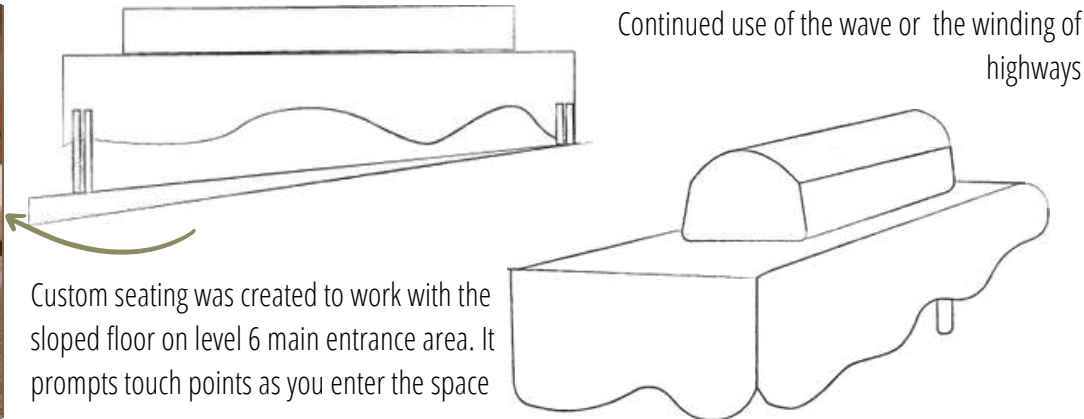


# Wayfinding & Common Spaces

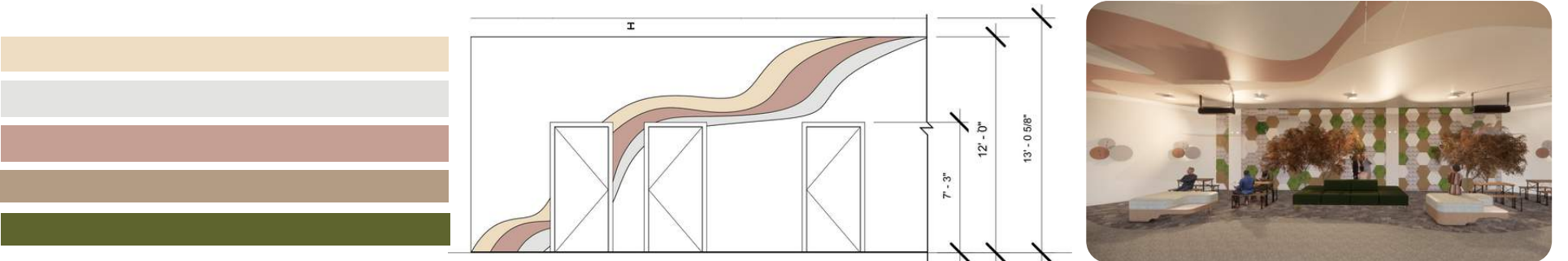
'Querencia' is a quality of life everyone deserves. Filling life with experience rather than things, having stories to tell, not stuff to show.



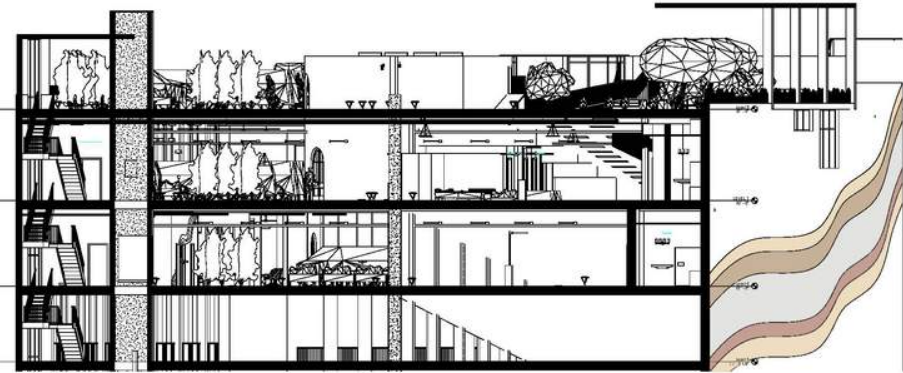
Each level has its own breakout so the users can have a movement to be in a larger space. although home may be a car the design was meant to enable these kinds of residences to feel and exist as someone would in a more traditional or brick and mortar residence would.



A visual journey created through the use of organic wayfinding both interior and exterior. The section also shows more of the spatial relationship between the floors



Canopy: Repeated element from level 6



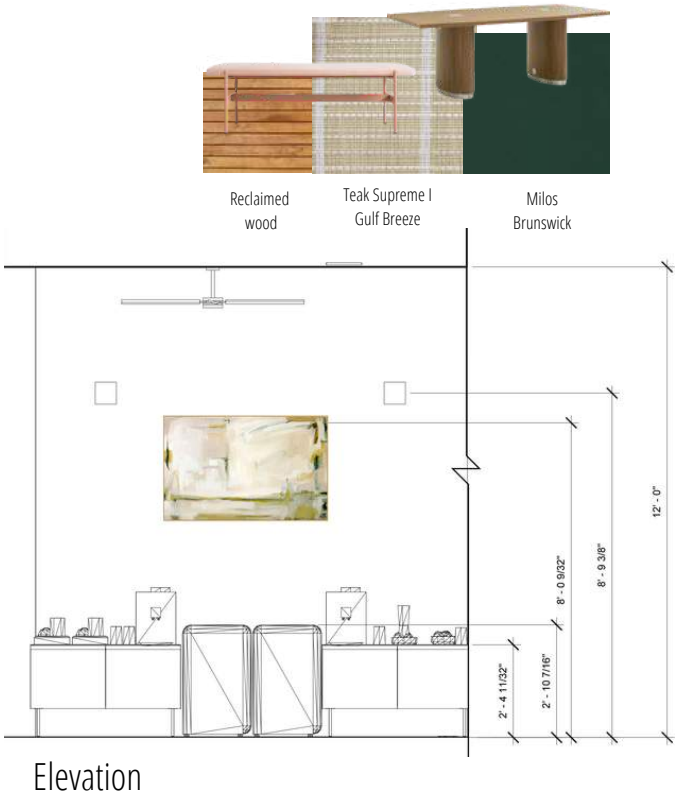
Transverse Section





# Common Spaces

At Night



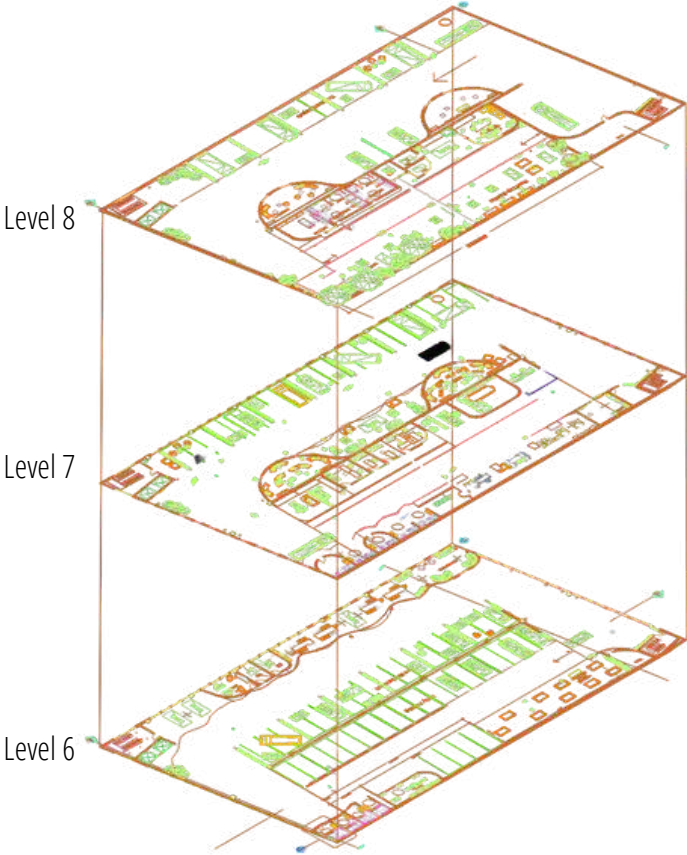
Co-work Area



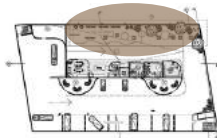
Campfire Theater

## Nature Awaits

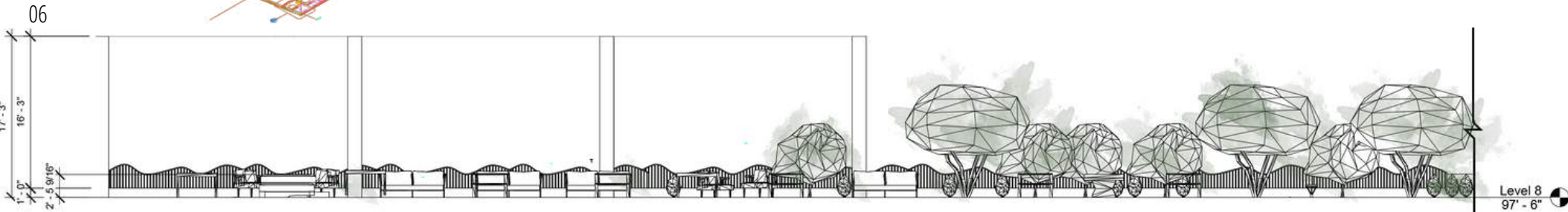
- Use of the Environment Behavior Theory
- Created Artificial Skylight for areas with limited daylight
- Concept of Nomadic Life and its connection to Nature
- Repetition of flow between floors canopy is the negative shape made on the 6th floor



## Rooftop Garden



Giving those who live in their vehicles a housing experience everyone deserves. The different levels makes it so the different kinds of residents are comfortable, safe and at home while living in this Urban Safe Parking space.





# ELEUTHEROMANIA

2019 | STUDIO 2: SPECIALIZED INTERIOR



Eleutheromania—the **irresistible** desire for freedom. Comfort can be found in this place of growth and authenticity. Eleutheromania creates an atmosphere in which a guest can be free while still experiencing the unique intimacy of a **local**, boutique hotel. Eleutheromania is about being able to escape your reality; freely moving as though it is your personal haven. The irresistible desire for **freedom** is encapsulated in a space that evolved through a peeling back of complexities. A place that embodies the liberation when walking through the subcontracted masses, **connecting** with a new surrounding.



MOOD BOARD | KIMPTON HOTELS

## 'Like a Local'

### PARTI DIAGRAMS



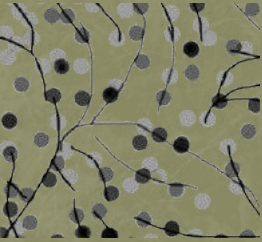
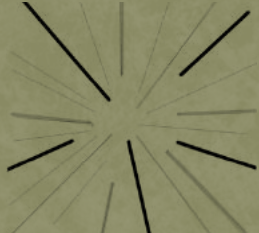
Local



Freedom



Connectivity



The handcrafted millwork in the lobby and cafe spaces, as well as the overall ceiling design, are all influenced by the Parti diagrams.

The welcome desk's base was built using locally-sourced materials, and freedom drawing was applied to explore how people may spread out and feel at ease in the area. Allowing the Boutique to serve as a bridge for more natural and transparent linkages between public and private spaces.

The brand mission of **Kimpton Hotels** influenced the location, environment, and culture drives of the overall project. The design is housed in one of Savannah's historic buildings.

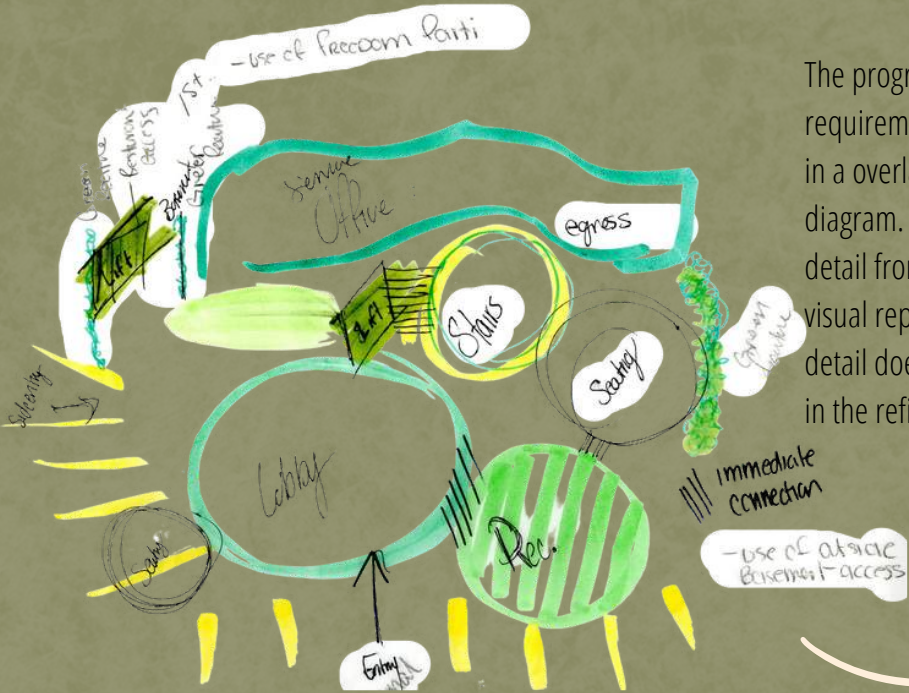


38 Montgomery Street, Savannah, GA

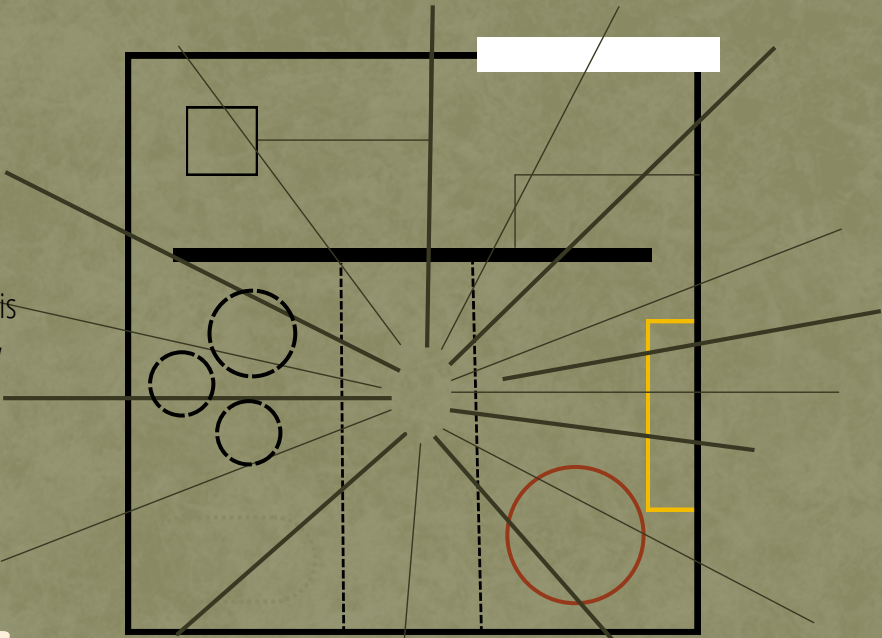
Bill Kimpton, the founder of the Kimpton Hotel franchise, started his endeavor in 1981. At the time, living with depression, Kimpton wanted his hotels to imbue their visitors with a sense of freedom and relaxation. Bringing this methodology into the development of 'Eleutheromania' helps divide the design into three sectors, **connectivity**, sense of **Freedom**, and how it works with the **local** scene.

### Users

Millennials | Business travelers | Historic Travelers | Savannah Locals

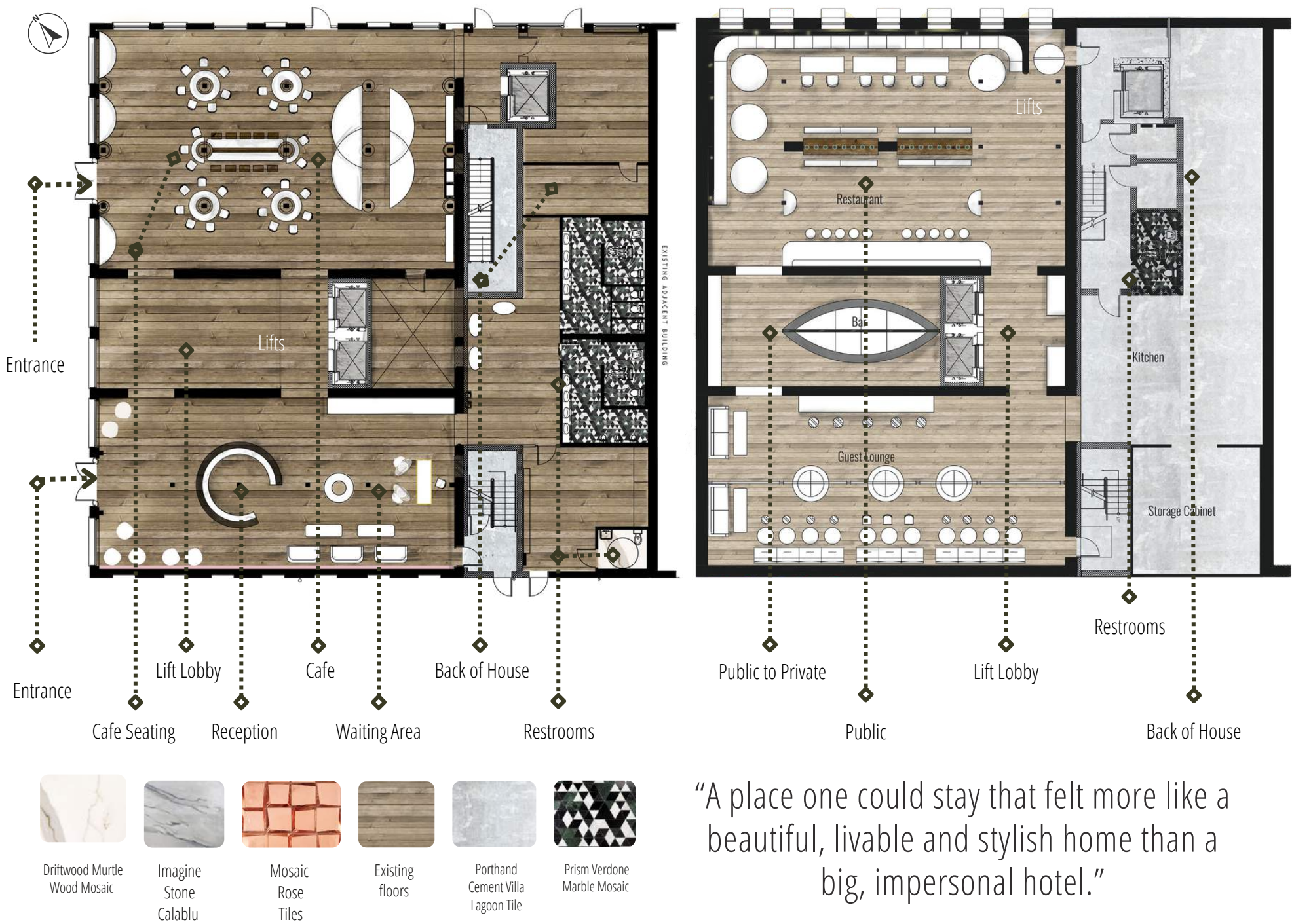


The program requirements simplified in a overlap of a block diagram. With the radial detail from the *freedom* visual representation, this detail does differ slightly in the refined plans

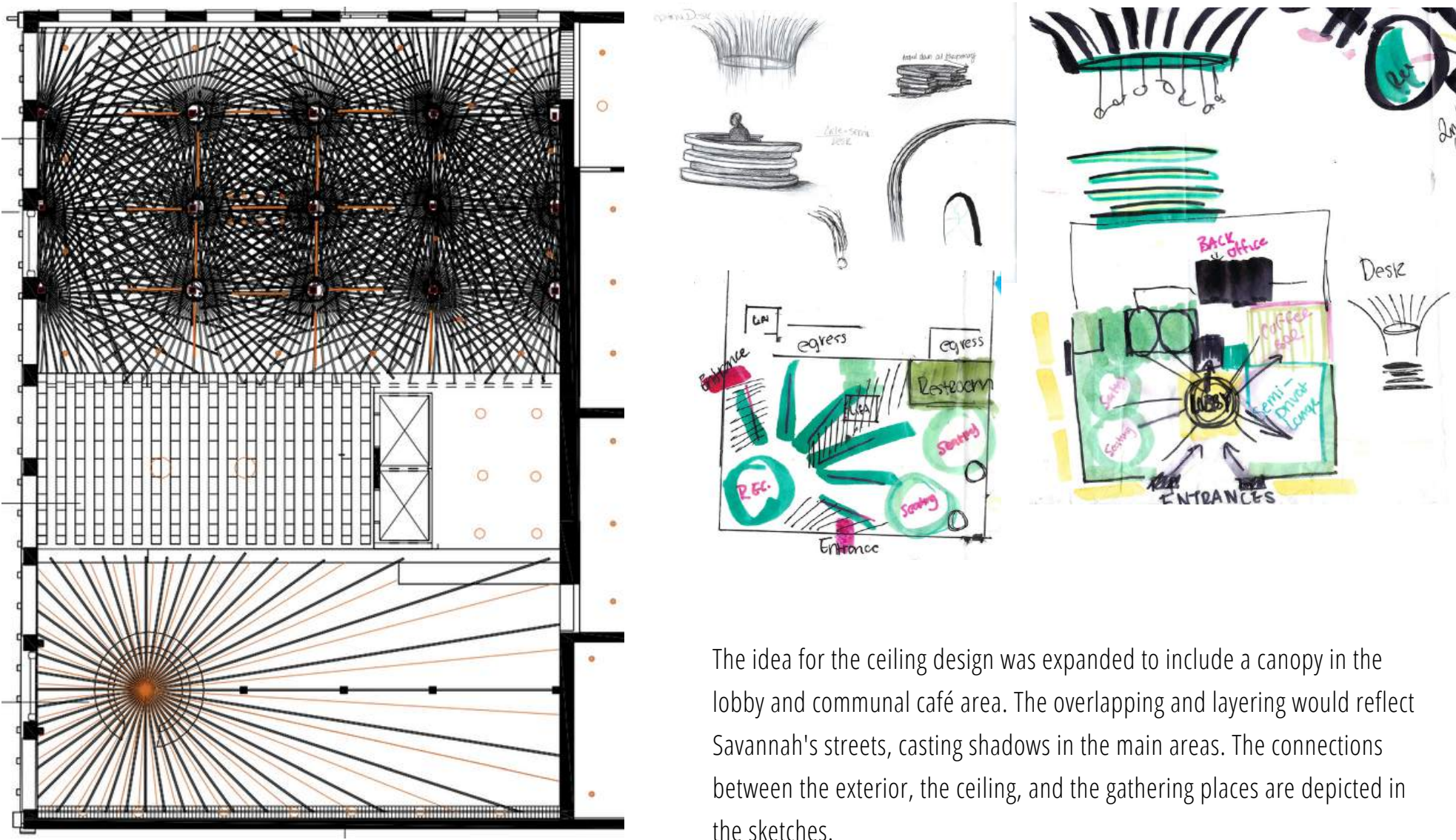




GROUND FLOOR & BASEMENT FURNITURE PLANS

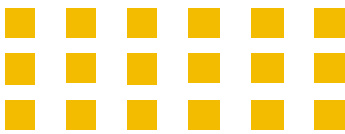


GROUND FLOOR CEILING DESIGN

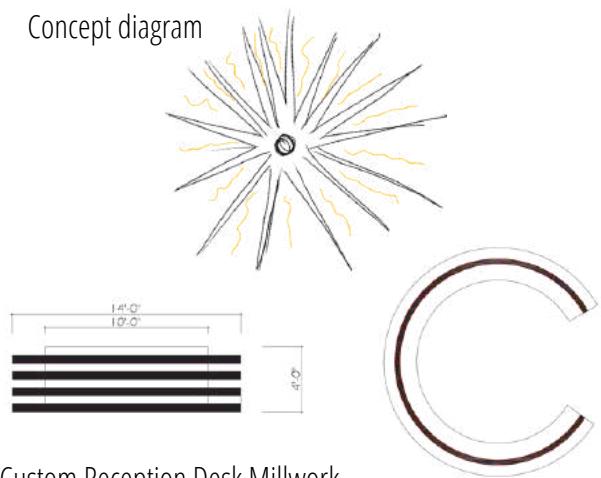




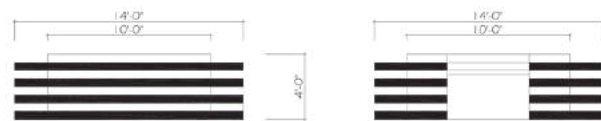
LOBBY ELEVATION AND PERSPECTIVE



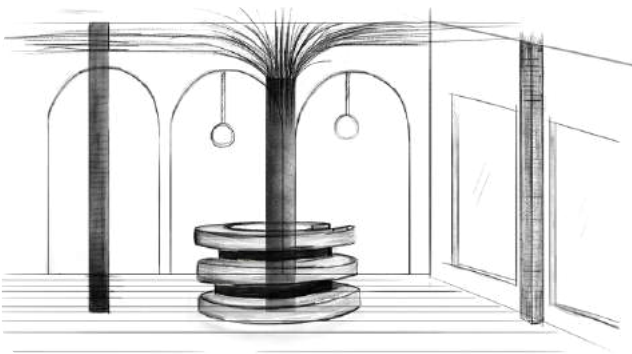
Concept diagram



Custom Reception Desk Millwork



Ceiling Detail Explorations



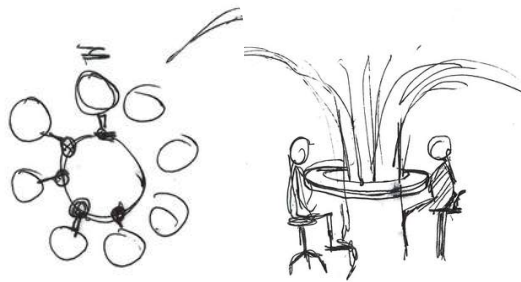
Private Guest Area, with access to Reception, Secondary egress and Hotel concierge  
Radial concept and uniformity-key words representation  
The arches symbolizes support and strength



ELEUTHEROMANIA | CAFE



Savannah Streets Ceiling Reference



Desk circulation

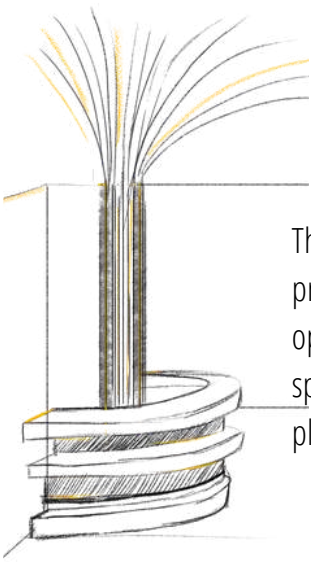
Custom column seating with abstract tree detail

Guest Room



Public to Private  
The café is located within the building to give the locals access and guest a secondary space to work in. Similar to the restaurant design with open and closed access points.

RESTAURANT SPACE



The shapes in the space promote socializing and openness. A feeling in the space of always having a place to be in



# MAISON DE JUANE

2019 | STUDIO 1: EXPLORING PEOPLE AND SPACE



A French businesswoman named Alex Beaumont works and lives in Admiralty, Hong Kong's financial area. Despite residing in a **small environment**, she was able to adapt to her surroundings thanks to her bright attitude. The required energy is still available throughout Maison de Juane. The customer, who enjoys socializing and has a pet, strives to keep a balance between **public** and **private spaces** in the home by dividing them. Small and condensed, with the capacity for five to six various applications in the area of the house that is more visible to guests. It comes down to setting up the room, from the phrase; from the phrase '**Mise en place**', a systematic way of living was created.



MOOD BOARD  
MISE EN PLACE

My Tasks in the Group Project:  
Project Lead, Diagramming, Dynamic Flexible Furniture,

## FURNITURE FLOOR PLAN

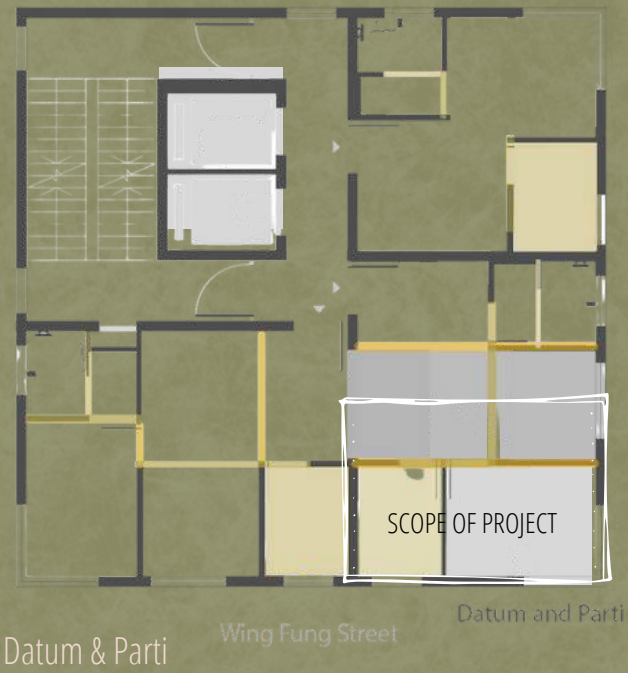
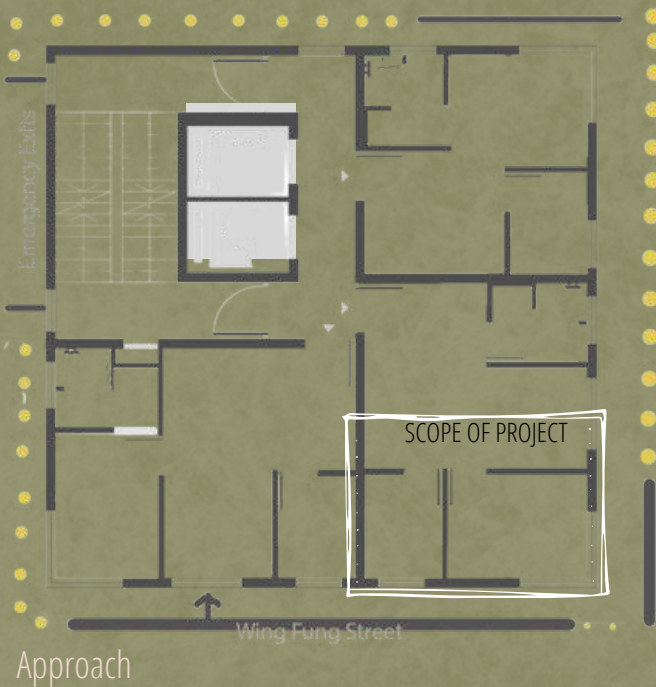
MICRO APT. HONG KONG



## MISE EN PLACE

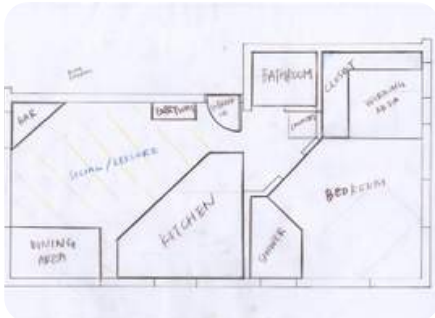
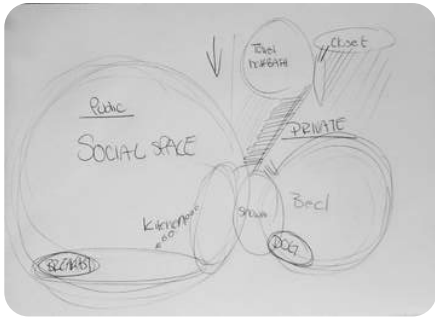
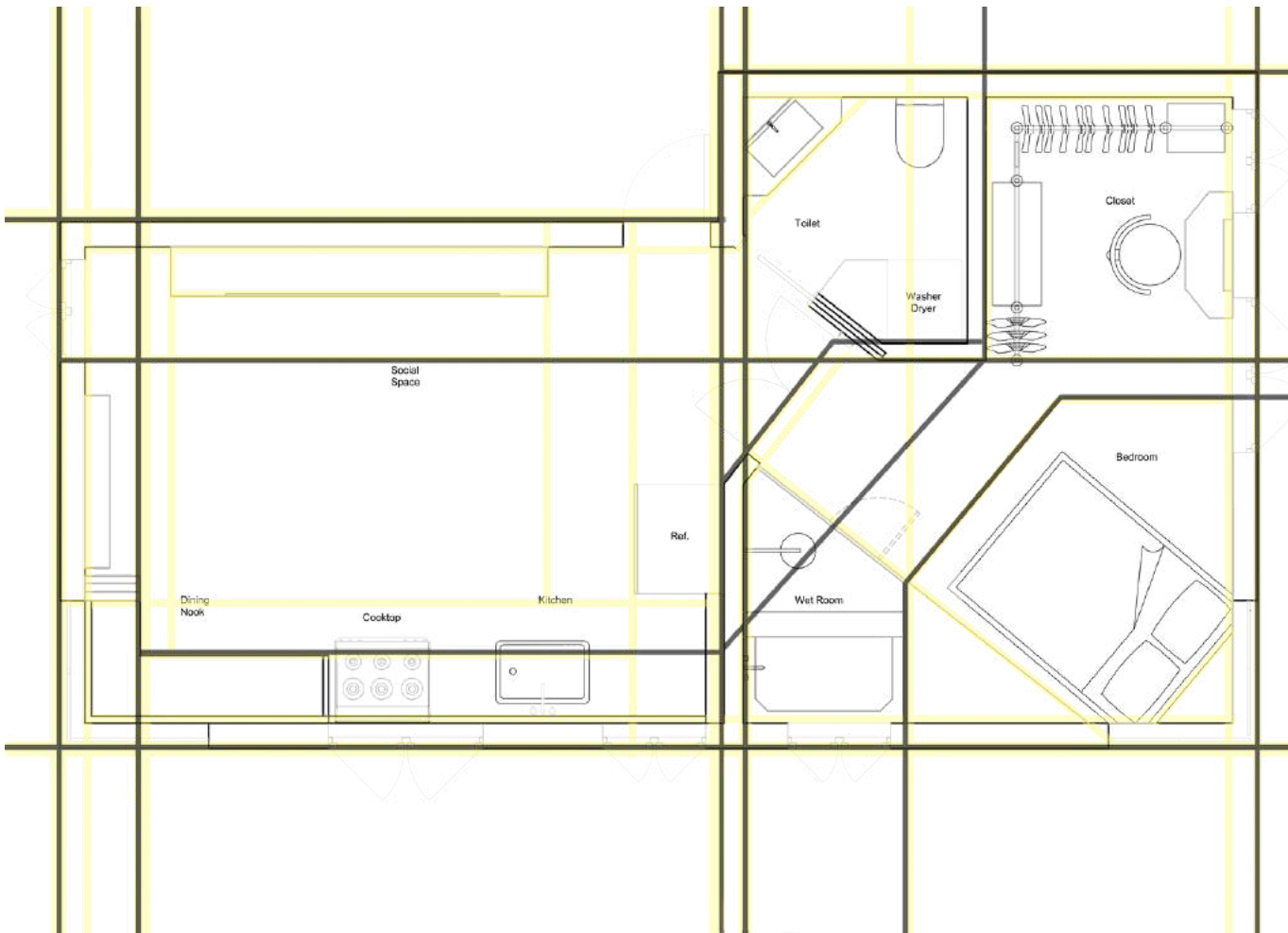
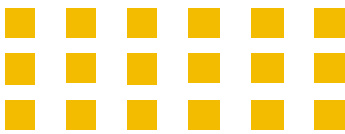
Typically referring to the organizational structure in a culinary setting, or “how one's stance towards a given environment places constraints on what one feels able to do within that environment”, mise en place addresses the need for multiple uses in a small space. In our conception, everything has a place but remains flexible enough to be adjusted to Alex’s needs as she changes and grows. The initial building analysis allows the group and I to identify the grid of the structural walls within the scope of the project.

## BUILDING DIAGRAMS





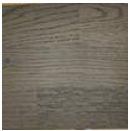
# MISE EN PLACE



**PARTI DIAGRAM | BASED ON  
DYNAMIC, MECHANICAL,  
BRIGHT**



Stainless Steel,  
Bead Blasted  
Black



Kahrs, Harmony  
Collection, 3 strip,  
Oak Fog Country, Matt  
Lacquer, Brushed



Power Dekor  
Floor, Vertical  
Carbonized



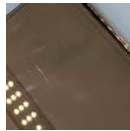
Master Resource  
Limited, Pattern:  
BIJOU, Color 4135-04



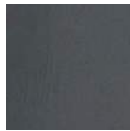
Concrete tile,  
Silvia 9866  
6492



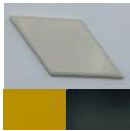
White Subway  
Concrete Tile



Rose Gold  
Mirror Glass

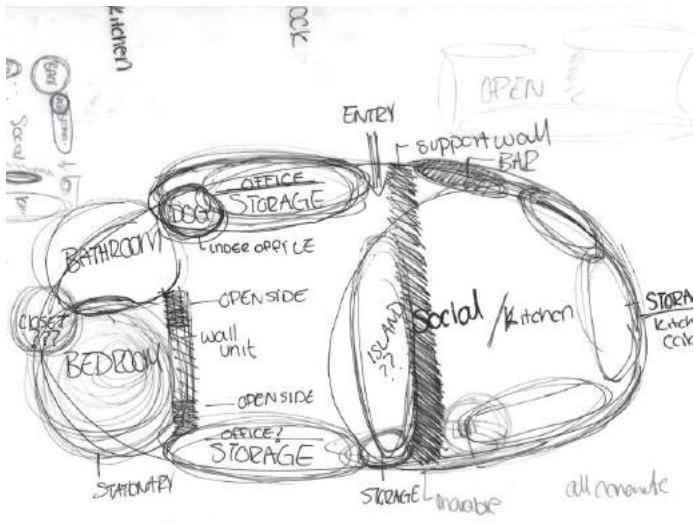


Dark  
Concrete

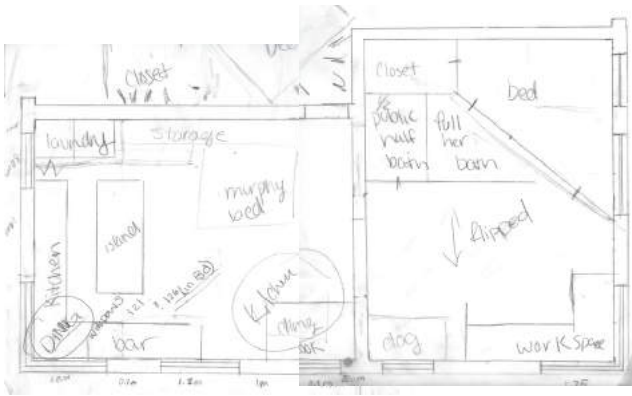


Diamond Tile  
in:  
Black Matte  
Glass: Orentop  
Ltd, Glasslam  
Mirror

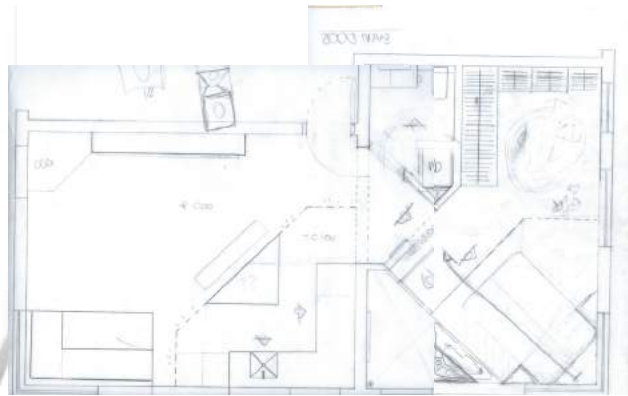
## Schematic Development



Bubble Stage



Block Stage



Scaled Block Stage

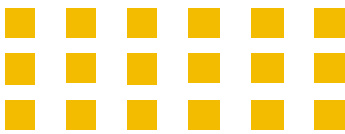
The two parti that were produced consist of one of a macro knowledge that leads to a micro analysis of the apartment unit as a whole. From then, a systematic interior build is created by understanding the building analysis and "Mise en Place" concept.

Expanding on how to create a fluid system to adapt to the function of the apartment. Following the natural parti of the built-environment we have created a system furniture and interior experience. It allows for the user to emphasis the public to private areas of the small but quaint home. For instance in the bedroom area although a private space we raised the bed on a platform to differentiate it from the open closet and personal ensuite.





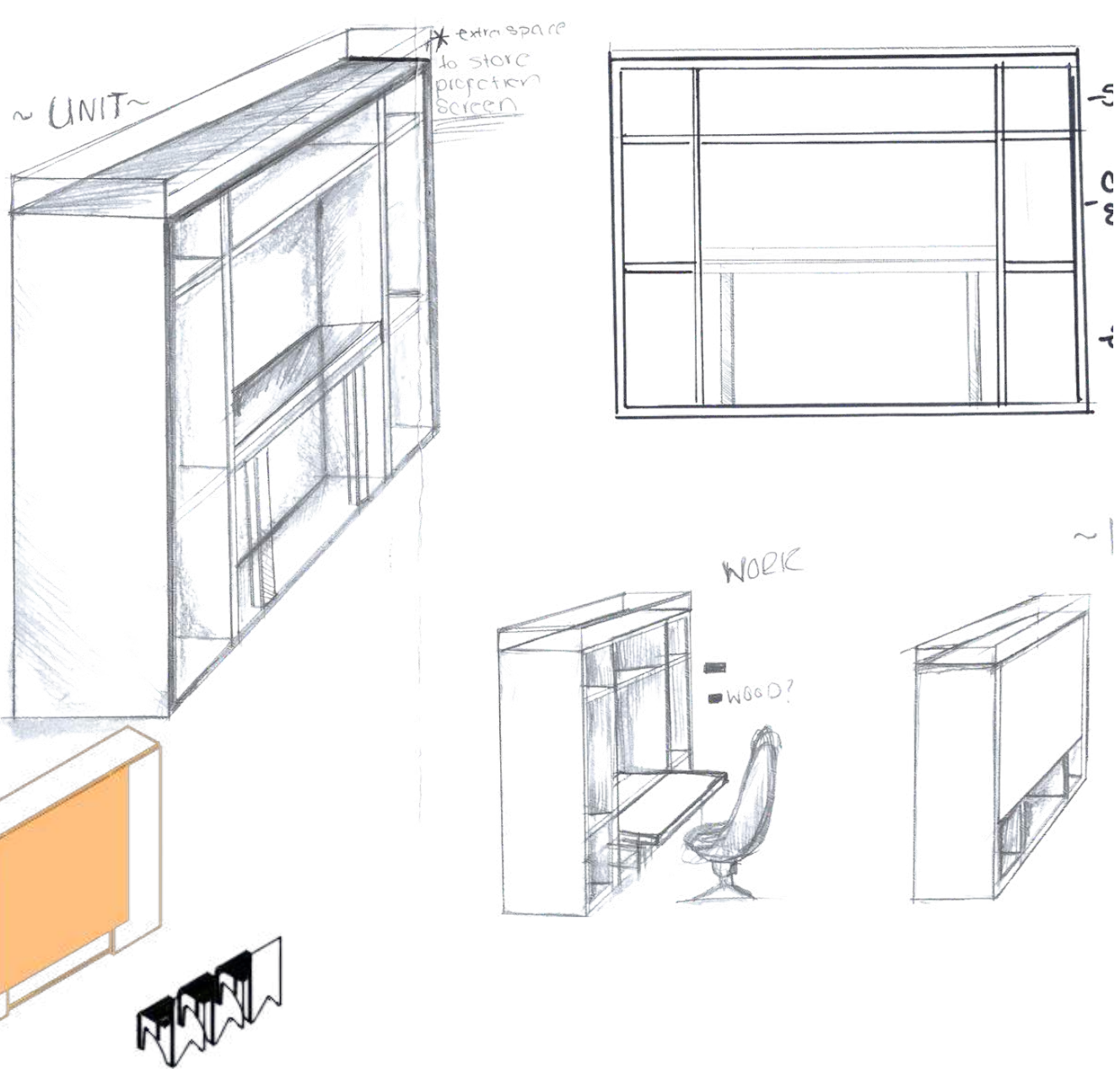
# Adaptable Furniture



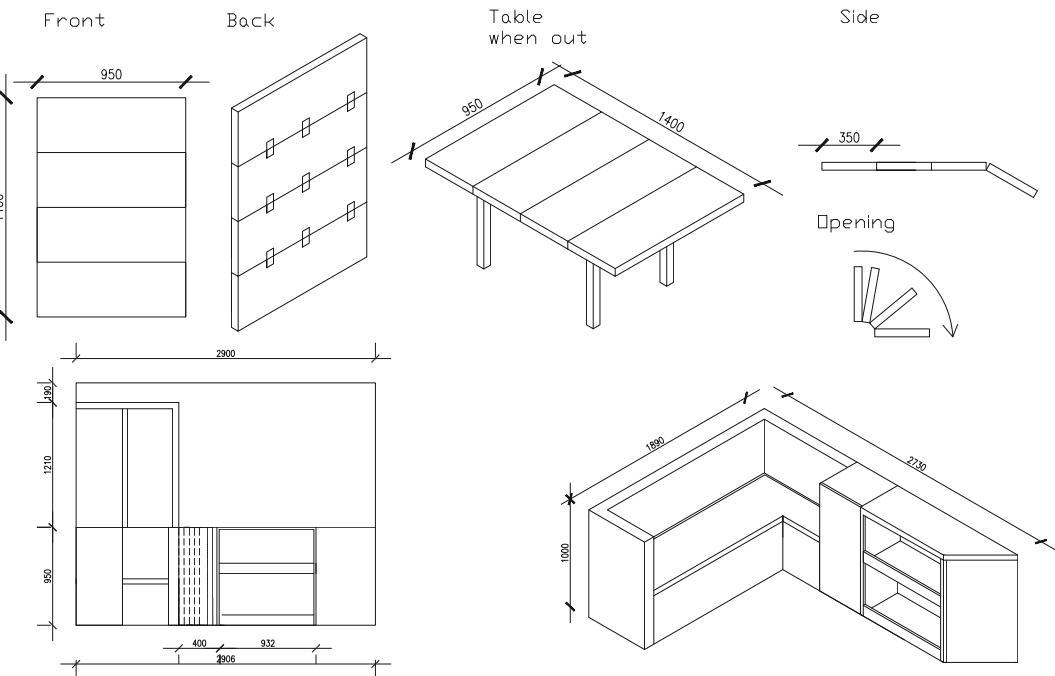
The fold out furniture in the representation of " Mise en Place", the different room functions can be pulled out from the main storage unit. And the dining table can be stowed away to make more for other activities. The Unfolds like a bifold or wallet into the space.

- Movie space
- Work from home
- Dining set
  - 6 to 10 people

In Hong Kong space in the more built up districts are valued more. Having this functional piece in the unit allows for the user to get more use out of the micro apartment.

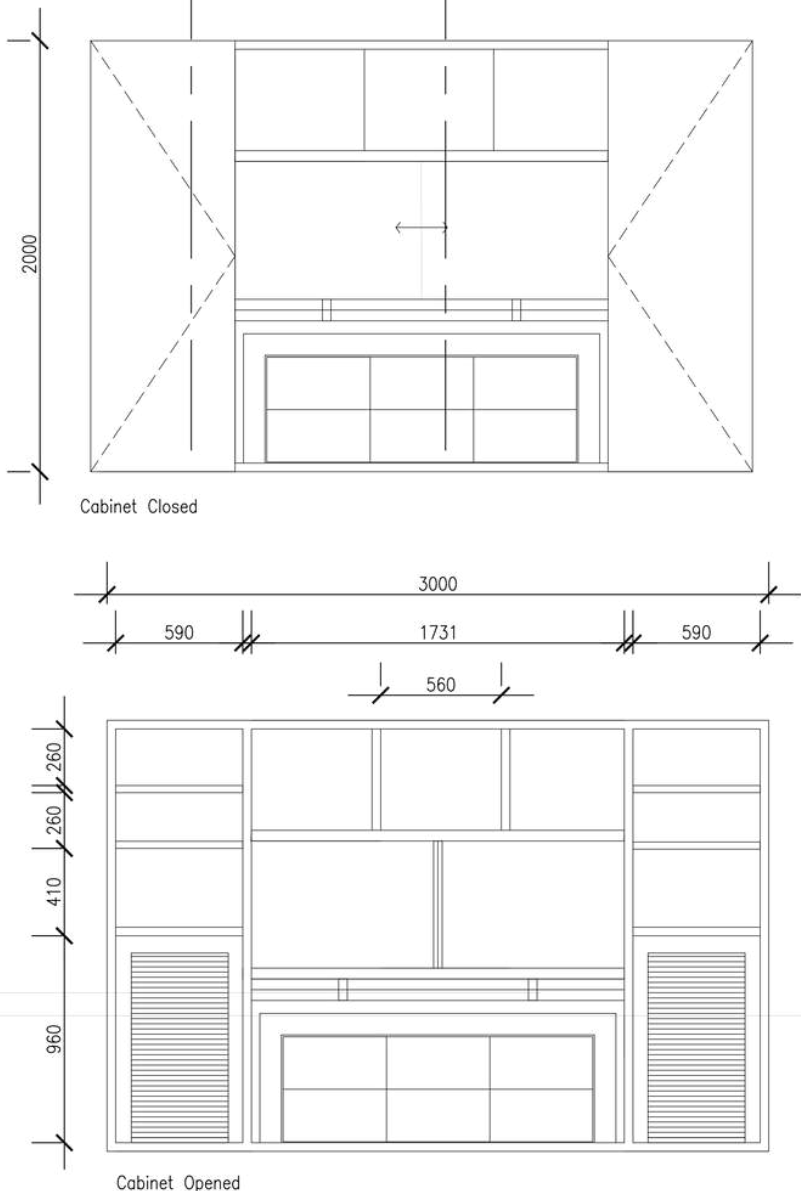


## DETAIL MILLWORK: COLLAPSIBLE TABLE AND CUSTOM DINING NOOK BENCH



## MEDIA STORAGE UNIT ELEVATIONS

Variation in cabinets façade when in use and closed





# REFUGE COFFEE KIOSK

2021 | STUDIO 4: SCAD PRO



When two elements are united, they work to strengthen and improve one another. The Georgia World Convention Center Authority and Refuge Coffee Co. working together generate an unbreakable synergy. The junction of the two brands emanates a strong sense of **belonging**, **inclusion**, and service. All visitors are intended to be welcomed by our design, which also supports the neighborhood. Upon arriving and congregating at this modest "welcome mat" of a kiosk, individuals from various cultural backgrounds would undoubtedly piece together a lively picture of the neighborhood.



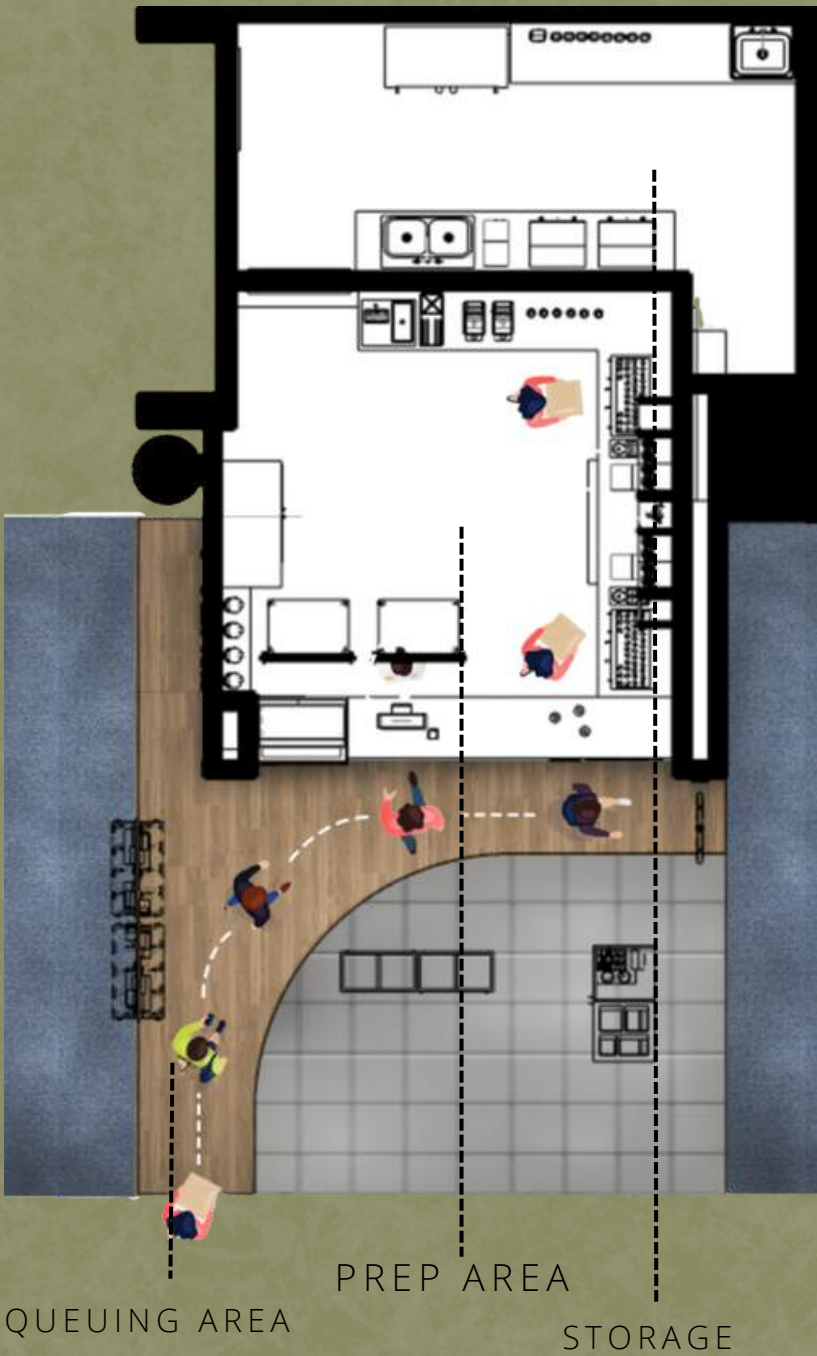
"THE WHOLE IS GREATER THAN THE SUM OF ITS PARTS"

Group Project: My task; SCAD PRO 2021  
Project Lead, Diagramming, 3D Modelling, Virtual Walkthroughs

MOOD BOARD | SCAD PRO GWCCA + REFUGE COFFEE

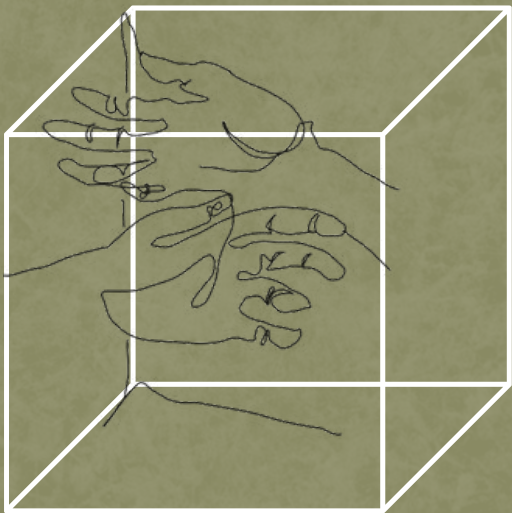


Outside the Box | Making your mark

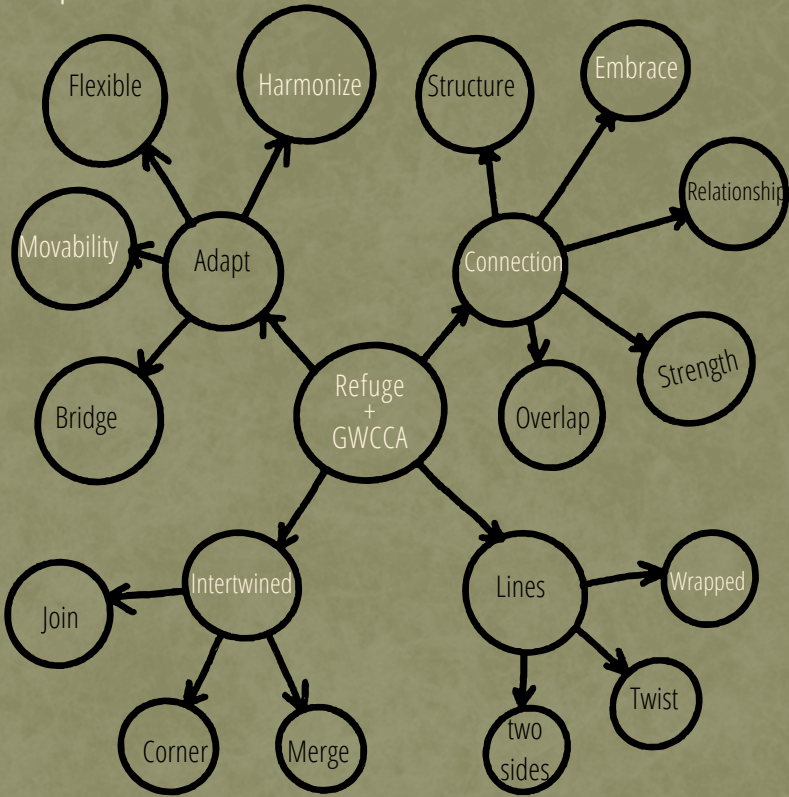


## PARTI DIAGRAMS

Going outside the box, a cube is created from converging point. Within those points lines and volumes can be from and become intertwined. In this parti diagram, a simple cube is transformed into a "larger whole of parts."



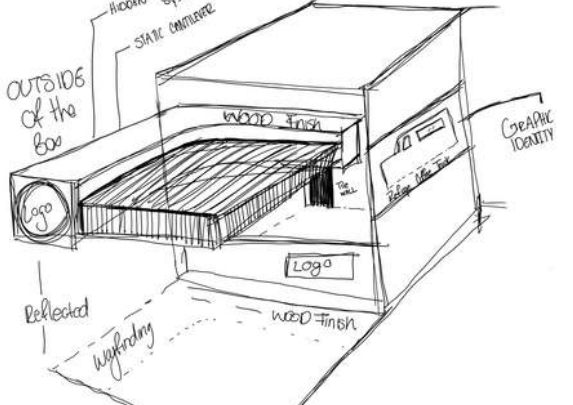
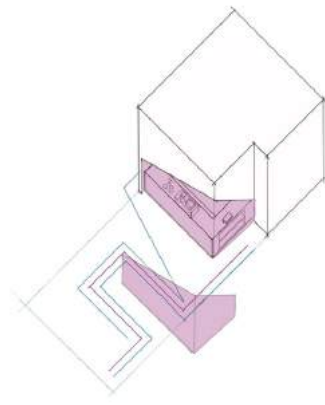
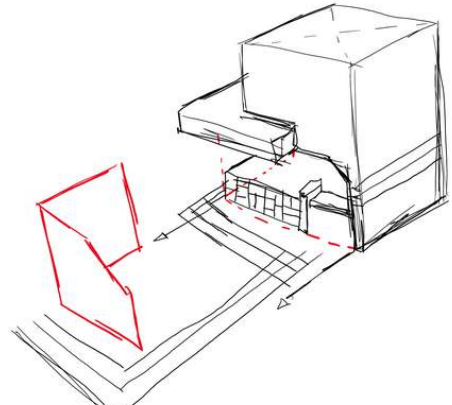
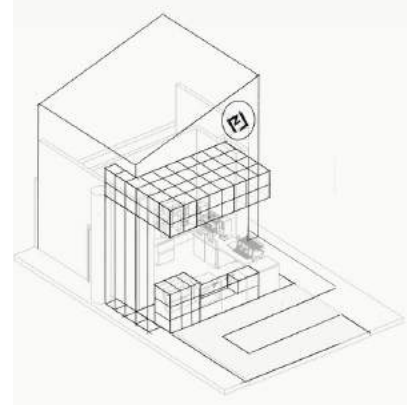
## Word Map





# OUR APPROACH

## Façade Development



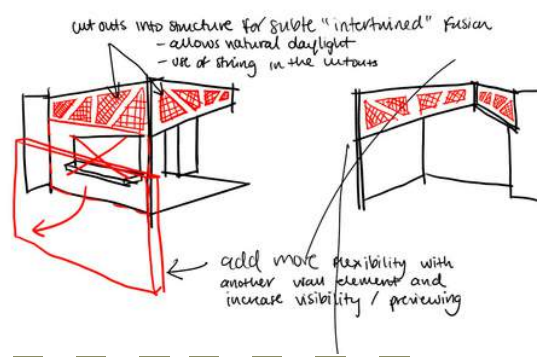
Enticing facade with various level and depth and emphasis on the floor pattern for queuing and display placement.

Moveable wall that define the corner of the GWCCA to direct visitors towards coffee, but add a physical block to the environment

Combination of Corner and Intertwined, providing movability, security and exact queuing process. The space is opened up but still had an element that blocks the area

Final look into how the flooring, volumes and negative/positive voids could be utilized. String detail in the ceiling to represent how society and stories interact, and a dedicated space for signage. The floor reflects the ceiling cantilever to provide spacing for a visual queuing process

### EXTERIOR STRUCTURE



## Exterior Signage



The Red Box Identifies the space as a first touch point as the kiosk is right of the entrances. The color entices you to investigate what the shop is selling/providing.

The reflected pattern in the ceiling and floor helps convey the direction of traffic.

The final design brings together elements from a subtle and basic shape with dynamic angles and structures into a more doable striking design.



- Bringing everything together greater than it is alone, from all sides of the structure there is a graphic identity that aids the narrative within the context of GWCCA





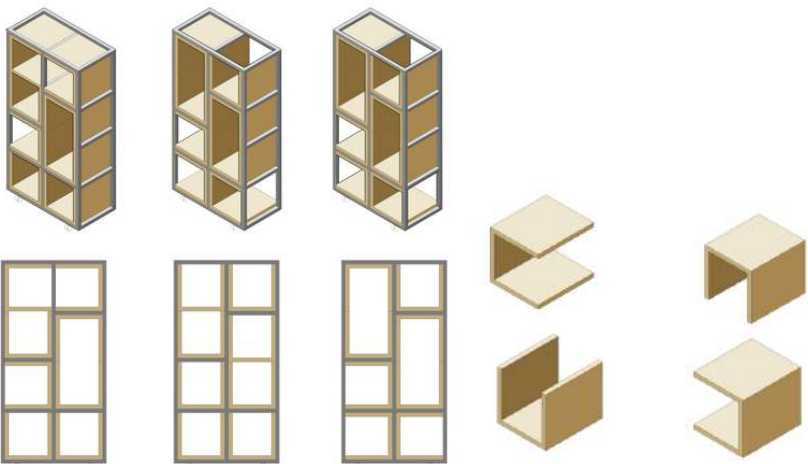


Flexibility with stability

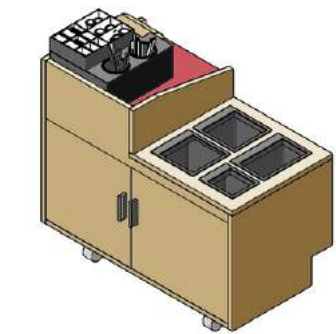
The design was about more than a beautiful facade. The goals are to create an adaptable display art that embodies both Refuge Coffee Co. and GWCCA. The two brands' values and missions merged as one, as well as developing a space that can easily transform based on the convention's needs and for the future use of the Kisok area.

Its whole is modular, so as the parts come together or spread out, the narrative is still defined. Using that ideology, the team designed flexible displays that could provide a surface to share the story behind Refuge, which is about being a place to help immigrants create workplace skills and helps them acclimate to the new customs within the United States.

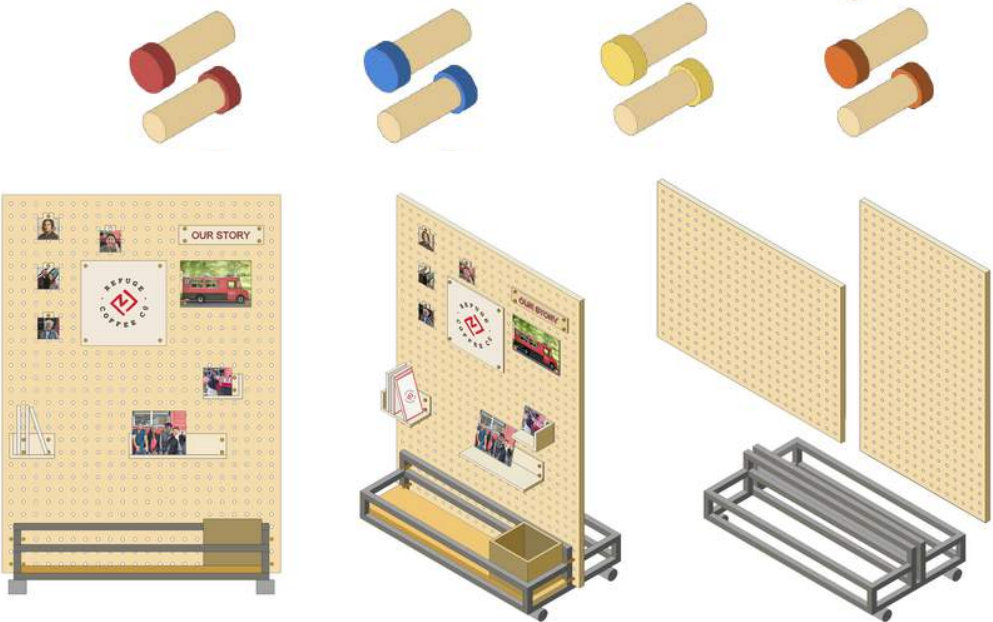
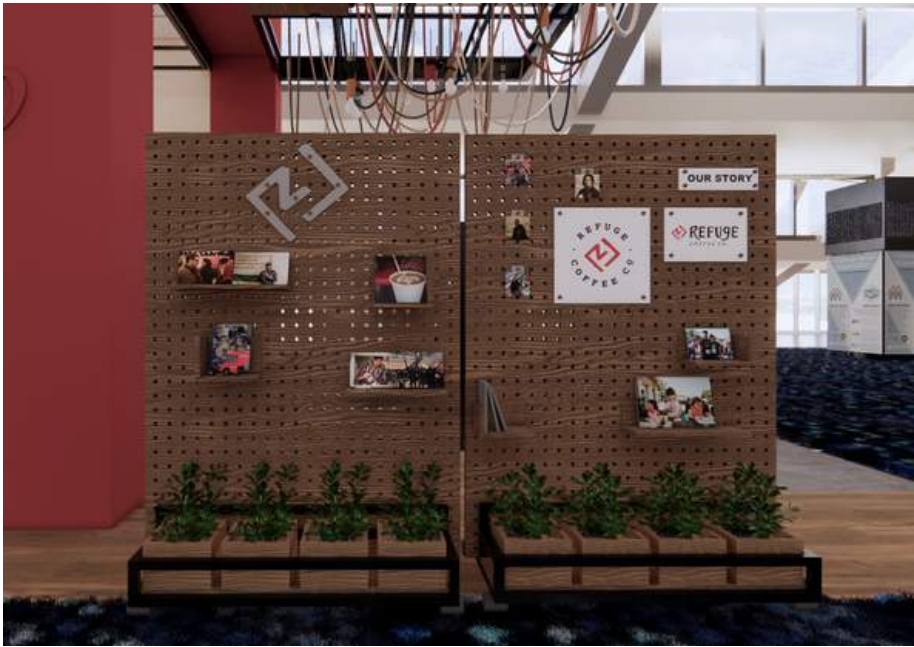
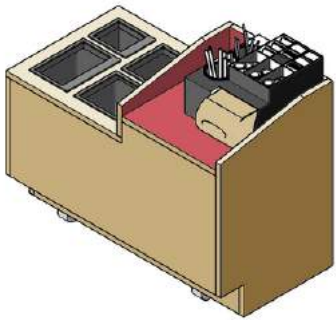
The pieces go together in a way that the lines and path used make the have a large story that embraces circulation, queuing a visual divided between the coffee and the mingling visitors on any given day.



Parts of the whole



Adjacent to the pick area for convenience





# SPARK Innovation Lab

2022 | GOOD 560: SCAD Serve



Decades of disinvestment overshadow the vibrant history, culture, and spirit of the neighborhood. Working with Sweet Auburn Works and Savannah College of Art and Design Serve, the group developed an environment that would be the initial Spark to reigniting the Sweet Auburn district into glory again. Noted as one of the richest black streets in history, the innovation label is a location that is about taking back the narrative of the area without impairing or erasing the history of this once-thriving neighborhood. The label will help refocus the retail in the heart of the Sweet Auburn Historic District.

Group Project: My task;  
Project Lead, Diagramming, 3D Modelling(renderings), Adaptable Drawings



MOOD BOARD | SCAD PRO GWCCA + REFUGE COFFEE



"Ensuring a foundation for ideas to become a successful reality"



Scan codes to view the different layouts of the fully adaptable space in 3D

## Development Attributes

### Inspiring

A brand that is a cornerstone of the African American community.

### Vibrant

A brand that is high-spirited, engaging, entrepreneurial, and community – building.

### Resilient

A brand that focuses on the future while honoring its historic past.

## Concept

POD re-TALE

Pods signify the individual pop up shops which in the retail space will narrate the story of the past combining the present and future for the community.

## Word Mapping





Floor Plans

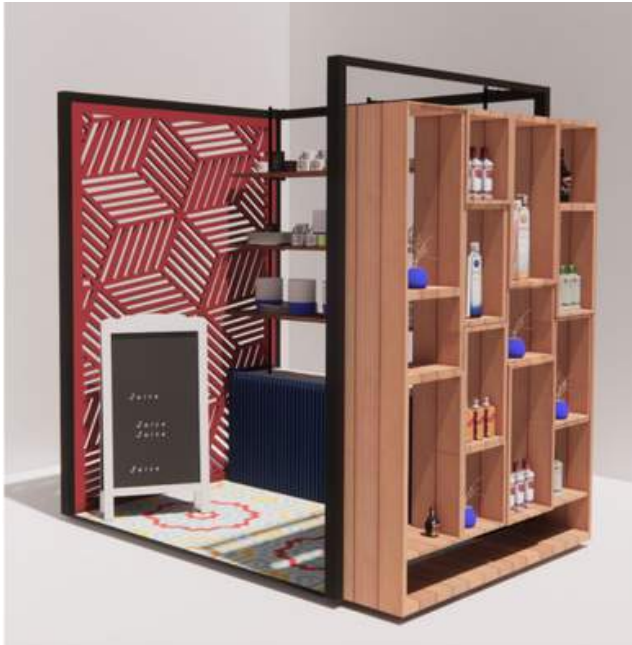
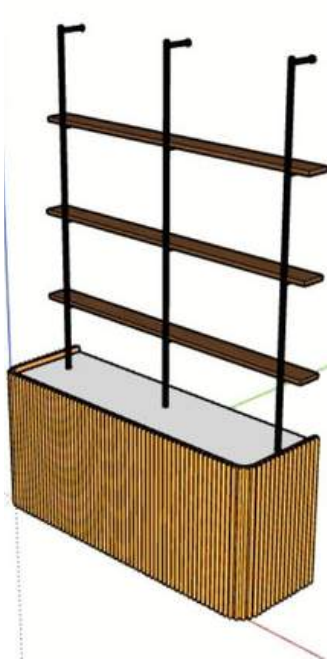
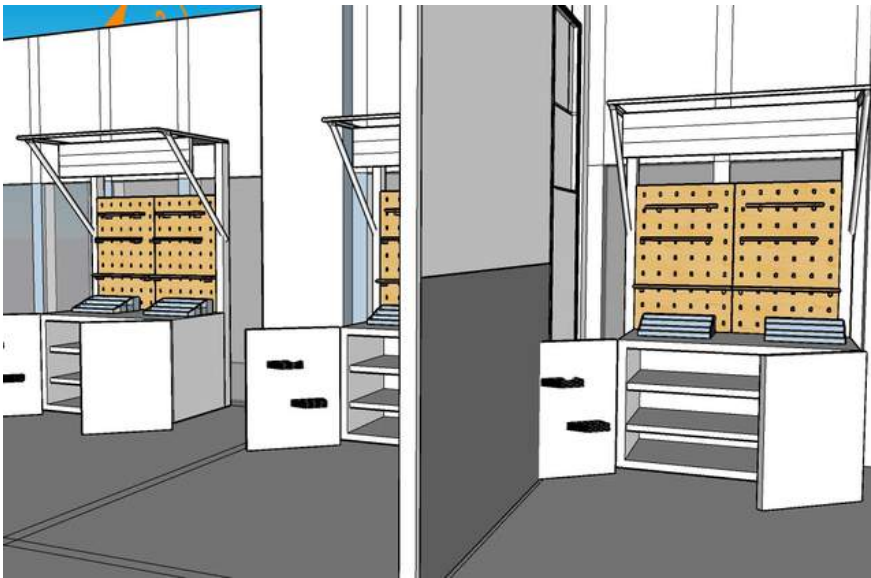
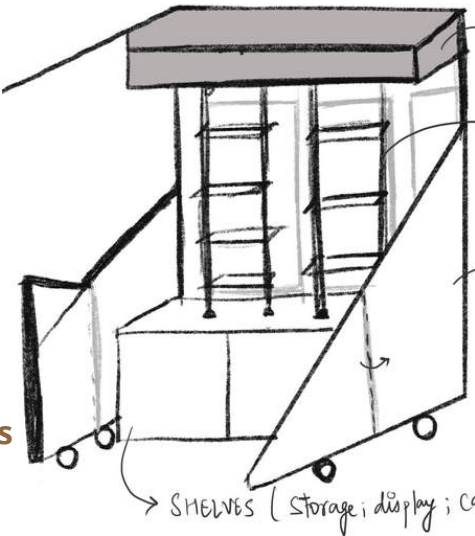


Hybrid

Fully Adaptable

Floor plans of the hybrid office/retail test concept space to enhance the local retail experience with a focus on preservation, revitalization, and promotion of the Sweet Auburn Historic District.

- Instead of using a closed frame, open **plastic fiber /PVC tubes** which can be locked together manually can be used to make it more user-friendly and **lightweight**.
- The space will feel open and large rather than chaotic.
- **Lightweight Movable fiber panels** can be used as partitions when needed to separate the booths.





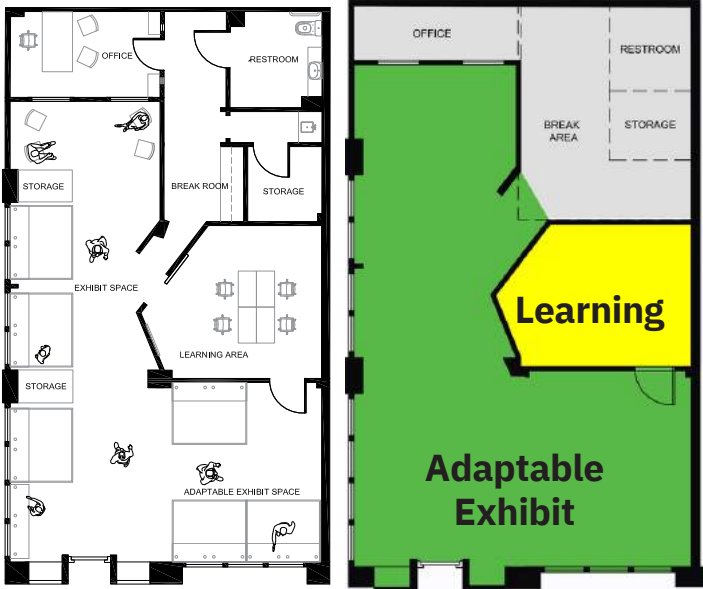


Configuration 1

Reaffirm the rich legacy and spirit of the neighborhood.

Spatial Concept 1

The exhibit and learning center are the leading functions of the space. A interior open market to help entrepreneurs devise a plan for the business venture. The Hybrid plan emphasis on the separation from the learning area to the exhibit as a way to show how the users go from ideas to actualized business ventures.



Circulation and Blocking

Remove walls between retail and adaptable spaces to create a distinct learning space.

Circulation

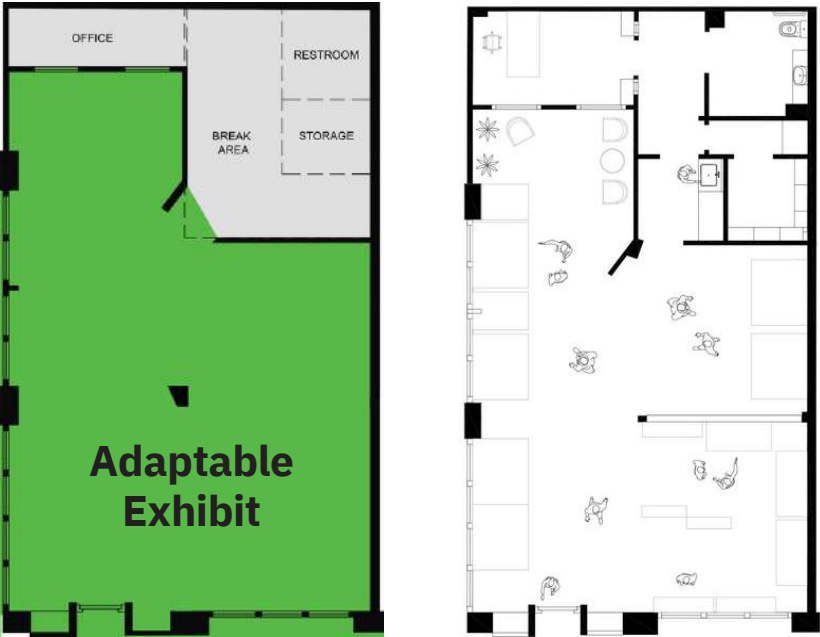
- Additional space to stop congestion at the entry.
- Greater adaptability for pop-ups within front areas.



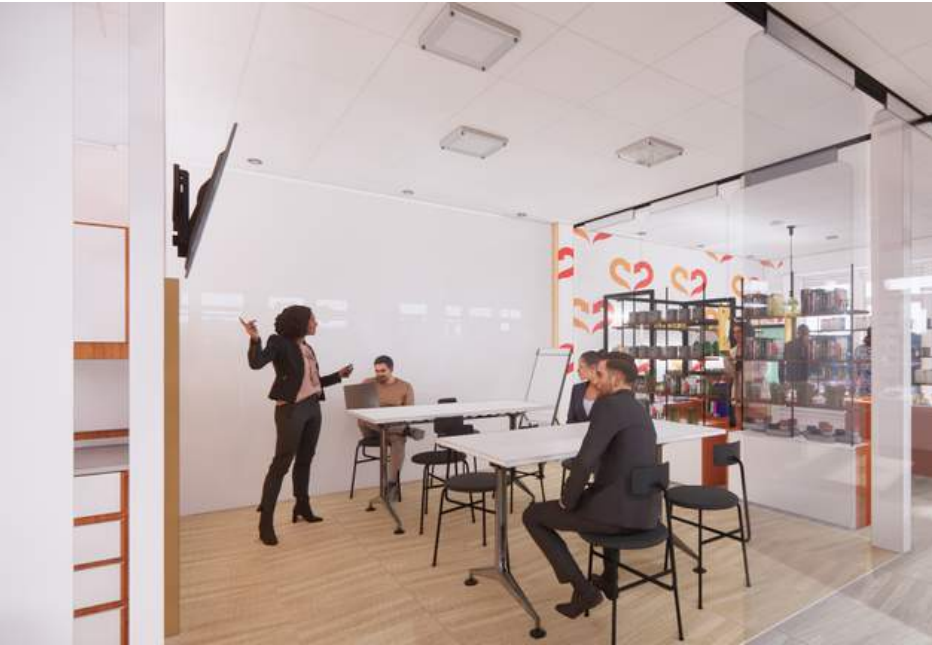
Spatial Concept 2

Configuration 2

Circulation and Blocking



Walls were removed from the entire space, and modular fixturing throughout the lab to create spaces as needed. With the space being modular it allows for a more open environment with going from a learning event to a full temporary market.







THANKS FOR VIEWING

